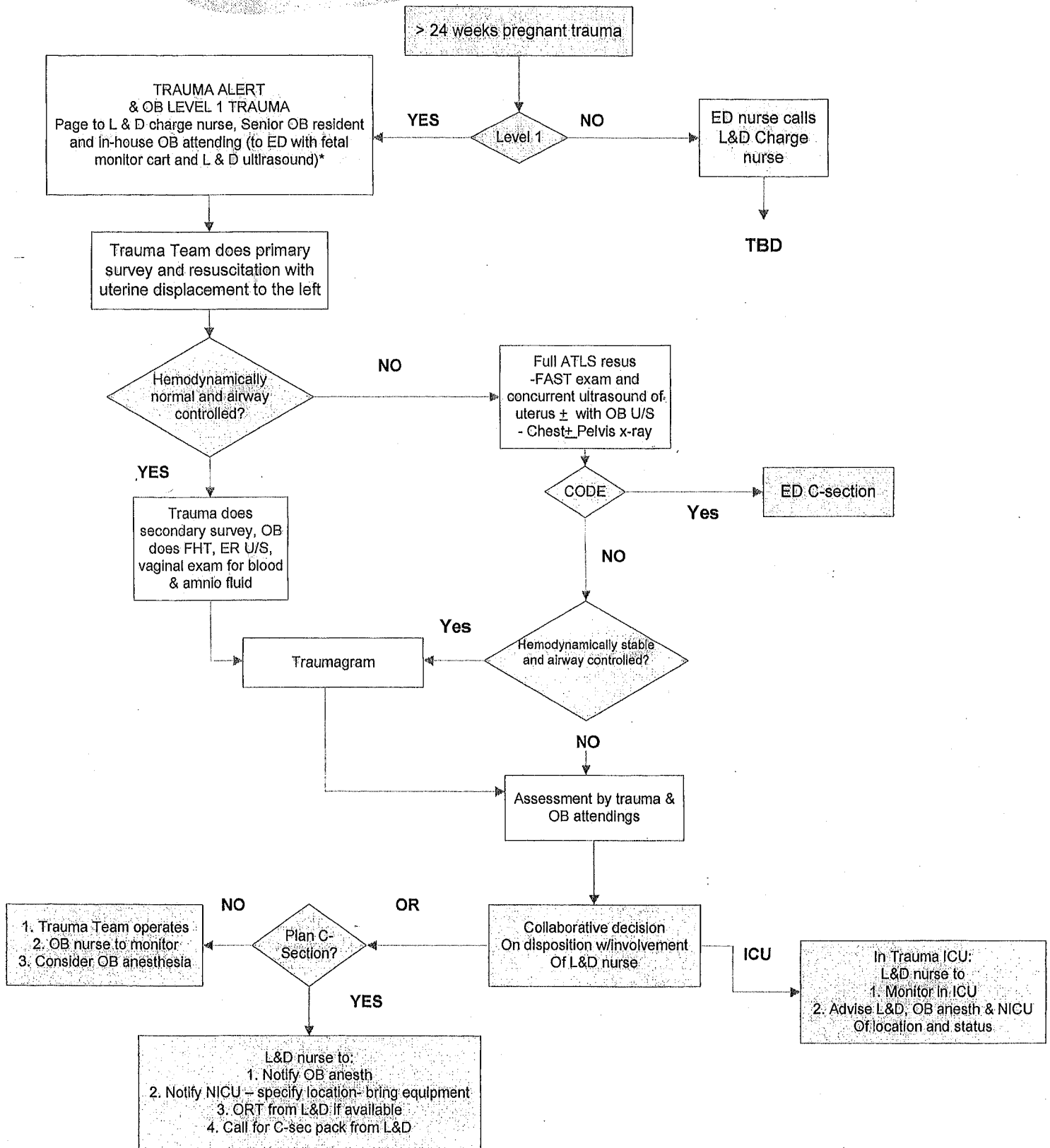


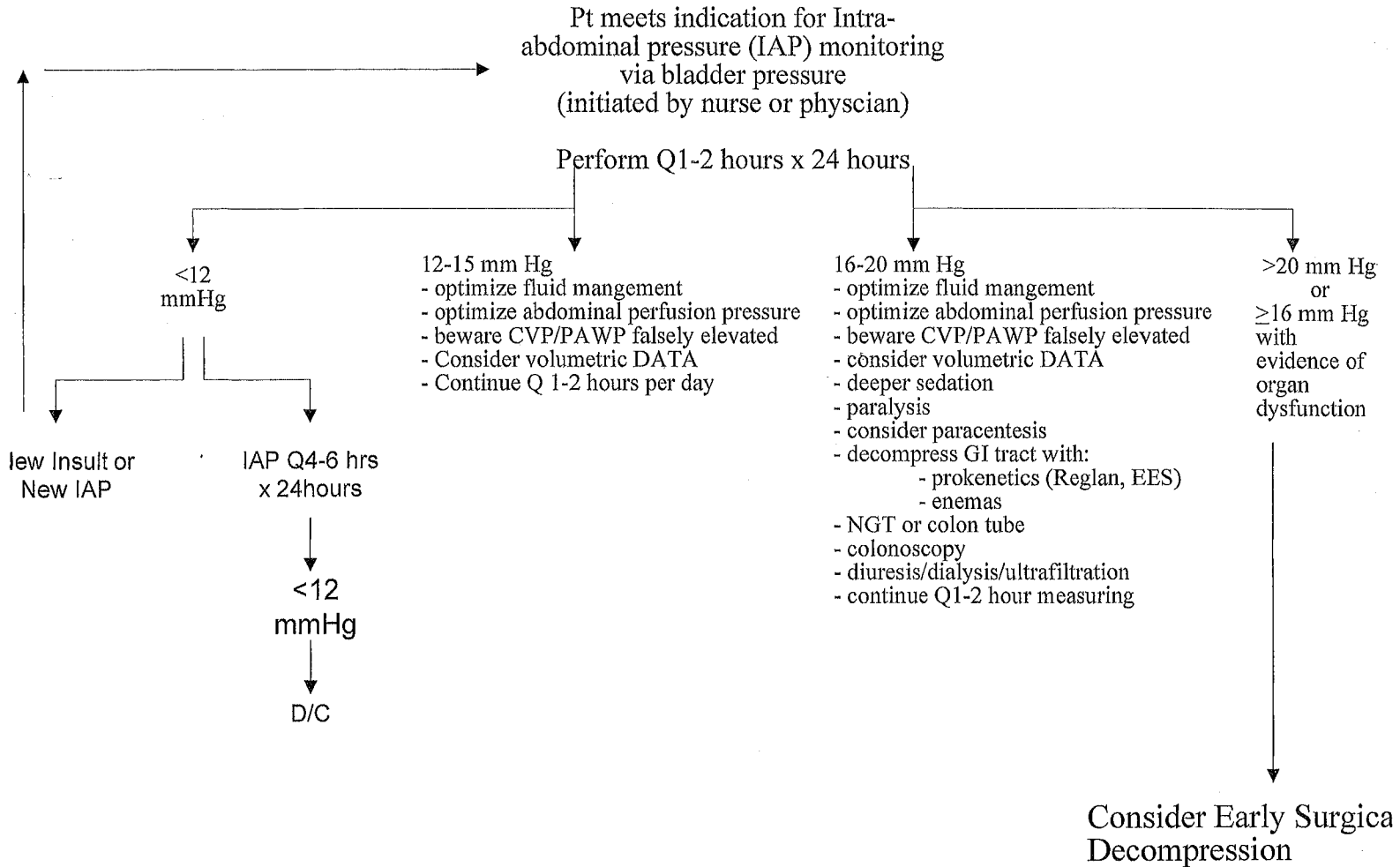
# TRAUMA OB PROTOCOL



\*OB Senior Resident and attending advise Trauma Scribe Nurse "OB Team here on standby." Remain on standby outside trauma bay awaiting direct communication with Trauma Team Leader and/or Trauma Attending

**Indicators:**

- Severe SIRS or sepsis
- Shock/hypotension
- Moderate to severe pancreatitis
- Large retroperitoneal bleed
- Large ascites
- Large ventral hernia repair
- Ruptured AAA repair
- Mesenteric ischemia
- Damage control laparotomy/open abdomen
- Intra-operative fluid balance >5L
- >5L crystalloid or > 4 units pRBC in 8 hours
- >10 units pRBC in 24 hours
- Severe CHI (6CS < 8 with ICP in place)
- Prone position



**REFERENCES:**

Malbrain et al. Intensive Care Med (2006) 32:1722-1732.  
Cheatham et al. Intensive Care Med (2007) 33:951-962.  
Ivatury et al. Abdominal Compartment Syndrome textbook. 2006