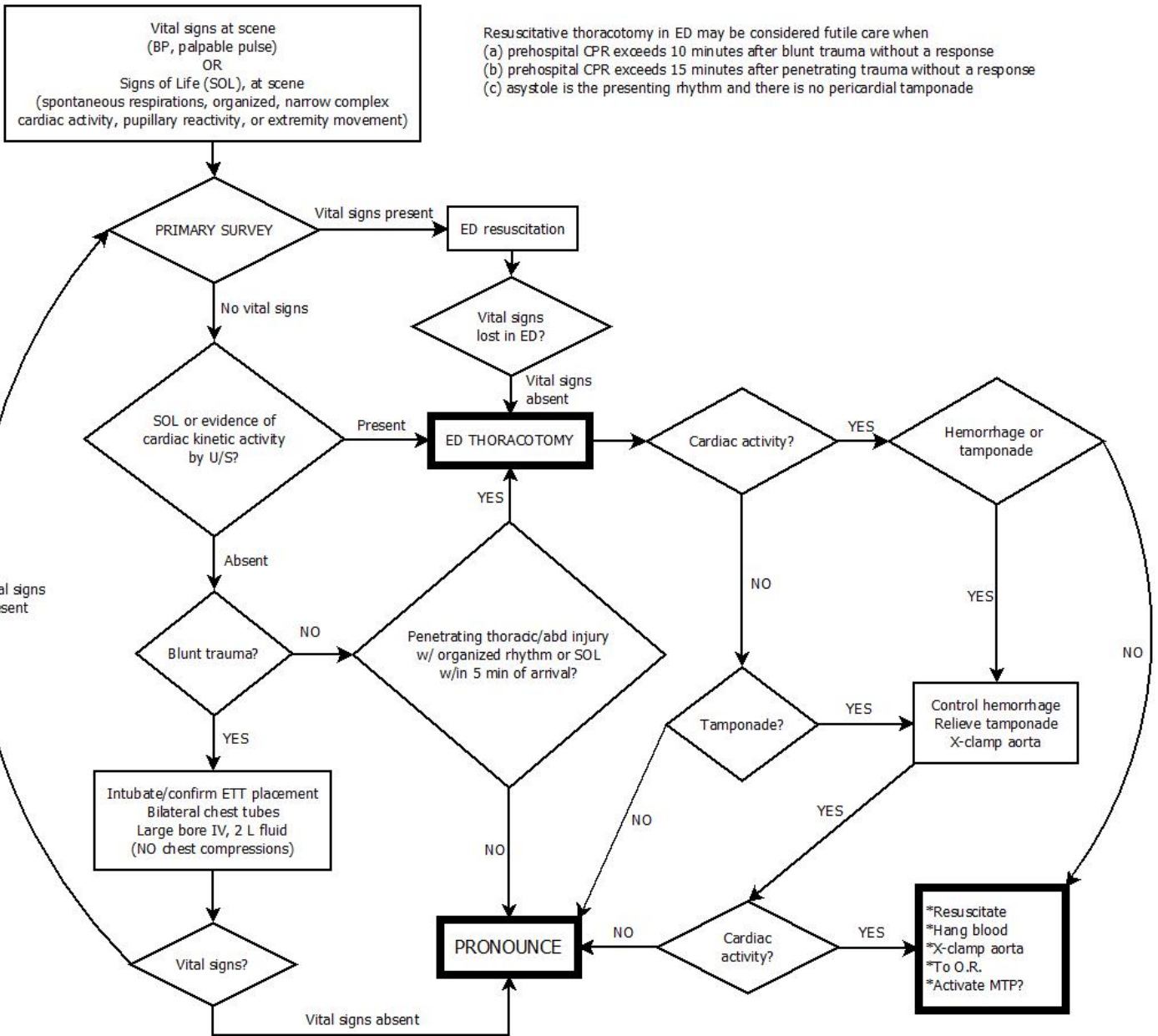


Emergency Department Thoracotomy Guidelines



Resuscitative thoracotomy in ED may be considered futile care when  
 (a) prehospital CPR exceeds 10 minutes after blunt trauma without a response  
 (b) prehospital CPR exceeds 15 minutes after penetrating trauma without a response  
 (c) asystole is the presenting rhythm and there is no pericardial tamponade

*\*\*\*If the designated Trauma Team Leader (TTL) participates in the performance of the EDT, a new TTL should be immediately assigned. Simultaneous with the performance of an EDT, an airway will be established, ETCO2 checked, peripheral access obtained, an OG tube passed, & right chest tube placed*

## REFERENCES

1. Powell DW. Moore EE. Cothren CC. Ciesla DJ. Burch JM. Moore JB. Johnson JL. Is emergency department resuscitative thoracotomy futile care for the critically injured patient requiring prehospital cardiopulmonary resuscitation? *Journal of the American College of Surgeons*. 199(2):211-5, 2004 Aug
2. Sikka R. Millham FH. Feldman JA. Analysis of occupational exposures associated with emergency department thoracotomy. *Journal of Trauma-Injury Infection & Critical Care*. 56(4):867-72, 2004 Apr.
3. Hoth JJ. Scott MJ. Bullock TK. Stassen NA. Franklin GA. Richardson JD. Thoracotomy for blunt trauma: traditional indications may not apply. *American Surgeon*. 69(12):1108-11, 2003 Dec.
4. Hopson LR. Hirsh E. Delgado J. Domeier RM. Krohmer J. McSwain NE Jr. Weldon C. Friel M. Hoyt DB. National Association of EMS Physicians Standards and Clinical Practice Committee. American College of Surgeons Committee on Trauma. Guidelines for withholding or termination of resuscitation in prehospital traumatic cardiopulmonary arrest. *Journal of the American College of Surgeons*. 196(3):475-81, 2003 Mar.
5. Balkan ME. Oktar GL. Kayi-Cangir A. Ergul EG. Emergency thoracotomy for blunt thoracic trauma. *Annals of Thoracic & Cardiovascular Surgery*. 8(2):78-82, 2002 Apr.
6. Ladd AP. Gomez GA. Jacobson LE. Broadie TA. Scherer LR 3rd. Solotkin KC. Emergency room thoracotomy: updated guidelines for a level I trauma center. *American Surgeon*. 68(5):421-4, 2002 May
7. Grove CA. Lemmon G. Anderson G. McCarthy M. Emergency thoracotomy: appropriate use in the resuscitation of trauma patients. *American Surgeon*. 68(4):313-6; 316-7, 2002 Apr
8. Miglietta MA. Robb TV. Eachempati SR. Porter BO. Cherry R. Brause J. Barie PS. Current opinion Regarding indications for emergency department thoracotomy. *Journal of Trauma-Injury Infection & Critical Care*. 51(4):670-6, 2001 Oct.
9. Working Group, Ad Hoc Subcommittee on Outcomes, American College of Surgeons. Committee on Trauma. Practice management guidelines for emergency department thoracotomy. Working Group, Ad Hoc Subcommittee on Outcomes, American College of Surgeons-Committee on Trauma. *Journal of the American College of Surgeons*. 193(3):303-9, 2001 Sep.
10. Feldman JA. Provider risk during medically futile emergency department thoracotomy. *Annals of Emergency Medicine*. 38(3):349, 2001 Sep.
11. Aihara R. Millham FH. Blansfield J. Hirsch EF. Emergency room thoracotomy for penetrating chest injury: effect of an institutional protocol. *Journal of Trauma-Injury Infection & Critical Care*. 50(6):1027-30, 2001 Jun.
12. Rhee PM. Acosta J. Bridgeman A. Wang D. Jordan M. Rich N. Survival after emergency department thoracotomy: review of published data from the past 25 years. *Journal of the American College of Surgeons*. 190(3):288-98, 2000 Mar.
13. Warren RL. Critical analysis of two decades of experience with postinjury emergency department

thoracotomy in a regional trauma center. *Journal of Trauma-Injury Infection & Critical Care*. 46(5):983, 1999 May.

14. Mittal V. McAleese P. Young S. Cohen M. Penetrating cardiac injuries. *American Surgeon*. 65(5):444-8, 1999 May.

15. Frezza EE. Mezghebe H. Is 30 minutes the golden period to perform emergency room thoracotomy (ERT) in penetrating chest injuries? *Journal of Cardiovascular Surgery*. 40(1):147-51, 1999 Feb.

16. Branney SW. Moore EE. Feldhaus KM. Wolfe RE. Critical analysis of two decades of experience with postinjury emergency department thoracotomy in a regional trauma center. *Journal of Trauma-Injury Infection & Critical Care*. 45(1):87-94, 1998 Jul.

17. Asensio JA. Berne JD. Demetriades D. Chan L. Murray J. Falabella A. Gomez H. Chahwan S. Velmahos G. Cornwell EE. Belzberg H. Shoemaker W. Berne TV. One hundred five penetrating cardiac injuries: a 2-year prospective evaluation. *Journal of Trauma-Injury Infection & Critical Care*. 44(6):1073-82, 1998 Jun.

18. Asensio JA. Murray J. Demetriades D. Berne J. Cornwell E. Velmahos G. Gomez H. Berne TV. Penetrating cardiac injuries: a prospective study of variables predicting outcomes. *Journal of the American College of Surgeons*. 186(1):24-34, 1998 Jan.

19. Fahoum B. Schein M. Wise L. Emergency department (ED) thoracotomy is occasionally a life-saving procedure. *Journal of Trauma-Injury Infection & Critical Care*. 41(3):575, 1996 Sep.

20. Brown SE. Gomez GA. Jacobson LE. Scherer T 3rd. McMillan RA. Penetrating chest trauma: should indications for emergency room thoracotomy be limited? *American Surgeon*. 62(7):530-3, 1996 Jul.

21. Salen P. Melniker L. Chooljian C. Rose JS. Alteveer J. Reed J. Heller M. Does the presence or absence of sonographically identified cardiac activity predict resuscitation outcomes of cardiac arrest patients? *American Journal of Emergency Medicine* (2005) 23, 459–462.

22. Moore EE, Knudson MM, Burlew CC, et al. Defining the limits of resuscitative emergency department thoracotomy: a contemporary Western Trauma Association perspective. *J Trauma*. Feb 2011;70(2):334-339.